

The background is a dark blue gradient with various chemical structures and a DNA double helix. The structures are rendered in different colors: red, yellow, green, and light blue. Some structures are highlighted with a glow effect. The DNA helix is on the left side, rendered in a light blue color. The text is centered and reads:

Round Table:
Users Needs
a Bottom Up Approach

Food Sciences &
Regulation Scientists

Food Industry & Research

“you scratch my back and I’ll scratch yours”

win – win

- money worth spending
- Return ?
- Power of the media

vs

knowledge based entrepreneurship

– the “frapeliá” incidence : *frapé* + *elia* (olive)

Food Industry & Metabolomics

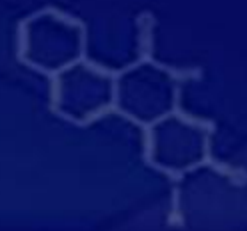
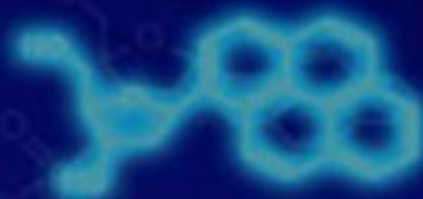
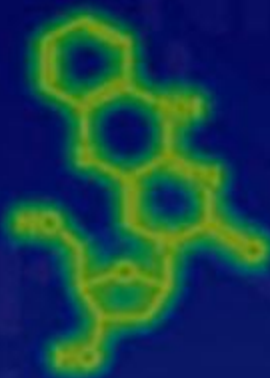
- Research
- Legislation
- Quality assurance / control



Who ?

How ?

What's missing ?



Metabolomics & everyday practice in the food industry

is it ready ?

- cost
- trained staff / instrument versatility
- standardization
 - data processing
 - equipment
 - QC / internal standards
- system stability
- reproducibility
- ...

Regulation – Legislation

- standardization
 - data processing
 - equipment
 - QC / internal standards
- system stability
- reproducibility
- **uniformity**

EU institutions